

**1. Put the parts of the digestive system in the order that food travels through them.**

- a. oesophagus
- b. stomach
- c. anus
- d. large intestine
- e. rectum
- f. mouth
- g. small intestine

**2. Write the parts of the digestive system to their function.**

- Where food that cannot be digested passes into before becoming poo
- Connects your mouth to your stomach
- The opening at the end of the digestive system; faeces pass out of the body here
- Faeces is stored here
- A muscular bag that mixes food and drink with acid
- Where nutrients are absorbed into your blood
- Mechanical and chemical digestion starts here

**3. Fill in the blanks**

- The mouth is where most \_\_\_\_\_ digestion takes place-
- \_\_\_\_\_ enzymes in saliva start digesting starch into \_\_\_\_\_.
- The food is shaped into a bolus (ball) by the tongue and lubricated in \_\_\_\_\_ that is produced by salivary glands.
- \_\_\_\_\_ Tube that connects the mouth to the stomach. Where the food bolus goes after being swallowed.
- Wave-like contractions will take place to push the \_\_\_\_\_ down without relying on gravity.
- Stomach Food is \_\_\_\_\_ digested by churning actions.
- While --pepsin----- enzymes start to chemically digest proteins

-----is present to kill bacteria in food and provide the optimum pH for protease enzymes to work in the stomach.

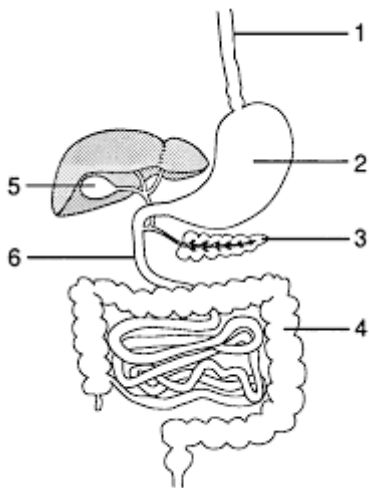
- Small intestine First section is called the -----
- pH of the small intestine is slightly ----- around pH 8-9 digested food molecules take place.
- The ilium is lined with ----- to increase the surface area over which absorption can take place.
- In the large intestine ----- is absorbed from remaining material in the colon to produce faeces is stored in the -----and removed through the anus.

[4 ]

a. Write 3 enzymes are secreted by pancreas and small intestine

-----  
-----

b. Name the parts of the digestive system



5]. explain the following terms

- a. Digestion
- b. Peristalsis
- c. ingestion
- d. Emulsification
- e. Egestion -

Kaushalya-[www.top.lk](http://www.top.lk)